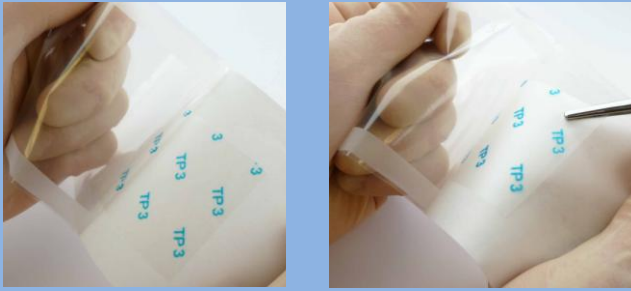


Open and Dispense



Carefully peel apart inner pouch in sterile field. A second person (usually the surgeon) can now gently remove patch with forceps. No preparation is necessary and the patch is now ready to use. Ensure the logo is facing upwards and readable throughout placement.

Apply to Tissue

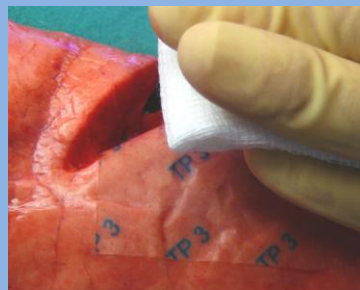
Target tissue should be gently swabbed, but does not need to be absolutely dry. Place the patch gently on the tissue.



If necessary the patch can be repositioned prior to being firmly applied to the tissue, if this is performed immediately.

Secure on Tissue

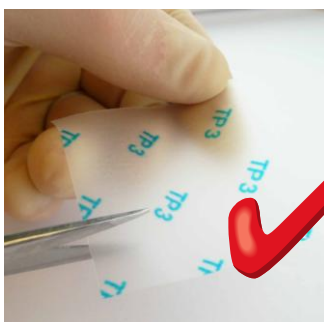
Apply a damp swab over the patch, encouraging tissue contact for **30 to 60** seconds. Carefully remove swab. If reassurance is needed repeat the exercise, but do not reposition or move the patch once in position. Overlapping patch edges to achieve coverage is possible although adhesion will be reduced.



30-60 seconds



Frequently Asked Questions



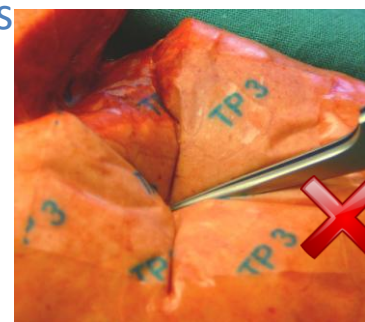
Can I cut it to shape?

Yes, but remember to restrict handling to a minimum. Product can be cut while in inside package for additional protection



Do I need to wet it?

No. Do not wet before application as this may adversely affect adhesion



Should I test adherence?

No more than necessary and never with sharp instruments